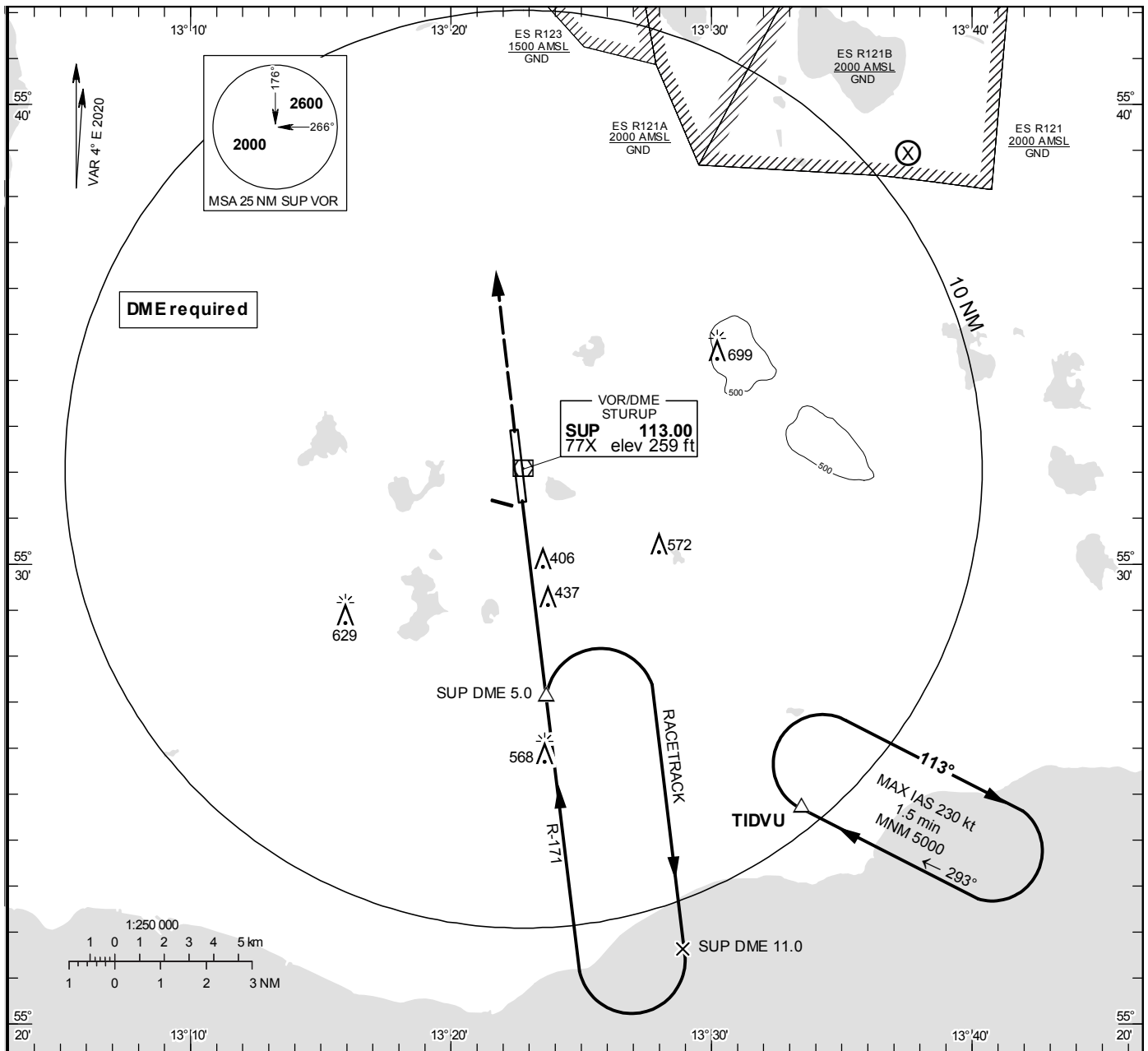


MALMÖ
VOR RWY 35**INSTRUMENT
APPROACH
CHART – ICAO****THR ELEV 236.3 ft, AD ELEV 237 ft**
OCH are related to THR.
Circling OCH are related to AD ELEV.
BRG are MAG
ALT. HGT and ELEV in ft.

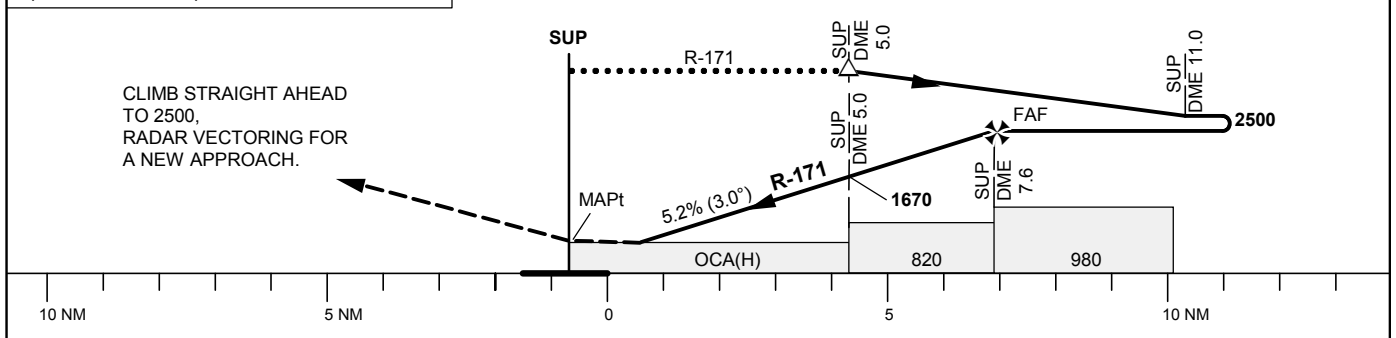
STURUP TOWER	118.805
SWEDEN CONTROL	134.980
STURUP ATIS	129.280

**TA 5000 ft AMSL**

Final APCH line offset 1°

*Timing not authorized for defining the MAPt

Special COM Failure procedures see AIP-AD 2



OCA (H)					Final approach		Distance FAF-MAPt 7.6 NM*					
Cat of ACFT	A	B	C	D	DME SUP NM		7	6	5	4	3	2
Straight-in Approach	690(460)				ALT		2300	1980	1670	1350	1030	710
					GS	kt	80	100	120	140	160	180
					Time	min:s	5:44	4:35	3:49	3:16	2:52	2:33
Circling	710(480)	740(510)	970(740)	1100(870)	Rate of descent	ft/min	425	535	640	745	850	960

CHANGE: Editorial